


A black rectangular sign with white text is mounted on a rough, textured stone wall. The sign is centered and features the text "THE OLD SCHOOL HOUSE" in a serif font, arranged in three lines. The wall is composed of irregular, layered stones in shades of brown, tan, and grey, with some white lichen or mineral deposits. The sign is secured by four small, circular fasteners at its corners.

THE OLD
SCHOOL
HOUSE



Standing proud within the North Lakes National Park, the Old School House has stunning views over the hills above Ullswater and wonderful walks straight from the door.

Originally built in 1722, our family fell in love with the house's symmetry, stonework and situation, and we have recently restored it to retain its character and reflect the land it was built on. With sustainability in mind, our carefully selected antique furniture gives new life to beautiful things, our eclectic library was rescued from a closing Oxford bookshop and our collection of Cumbrian pottery has been sourced from local auctions and antique shops.

We hope you enjoy discovering Old School House and the beautiful surrounding area as much as we do.



OLD SCHOOL HOUSE
MATTERDALE CA11 0LD



The House

Our history	3
Design inspiration	5
Lake District prints	7
Cumbrian Pottery	9
Green credentials	11
Dogs welcome	13
Practical details	15
Useful contacts	17
Departure	19

Out and About

Countryside code	23
Food & Drink	25
Doorstep walks	27
Things to do	29
Children	31
Literary connections	33

Finally

Keep in touch...	35
------------------	----



THE HOUSE

OUR HISTORY

Local boy, made-good, builds new school

The Old School House was built in 1722 by Reverend Robert Grisdale. Having been brought up and educated in the area and at Oxford on a scholarship, Grisdale wanted to repay his good fortune and decided to give Matteredale a school.

Grisdale had many relatives in Matteredale and his brother farmed nearby in the Dowthwaitehead valley. The school was described as a magnificent symmetrical building with a central door and fine oak staircase. For nearly 200 years the school was full of bustle and life with up to 60 pupils. The field around the school was used as grazing for ponies of children who rode to school, and parents who could afford it paid a penny a week. Relations between the school and the local farmers were at times strained as help on the farms, particularly at harvest time, was seen as more important than education, as children were expected to work for their living. In the 1890's new health regulations insisted the ceiling was raised thus reducing the upstairs classrooms, but more room was made downstairs by taking away the central staircase and moving the entrance door as well as taking some space from the teacher's accommodation.

In 1907 the school was moved into a new building next door. The school caretaker continued live in the Old School for many years, while the large downstairs schoolroom was used as a village hall, providing a popular community space for the whole valley. Neighbours still remember happy times spent playing whist, dominoes and beetle drives, putting on plays and musicals, and holding village fairs and society meetings.

When the caretaker died the house fell into a sad state of disrepair and eventually had to be sold. Our family, who have links in the area and have enjoyed many happy holidays here, rescued it in 2014 after falling in love with its symmetry and position. After a year of renovations, including digging out the hillside behind the house which had begun to push through the back door, and careful underpinning of the old stone walls, we are delighted to be able to share the house with friends and guests.

Sampler by 'Mary Kilgour Daughter of James and Sarah Kilgour, her work done in her 14th year AD1850 at Matteredale School.' (from a scan of a photograph). Verse above school house: 'And must this body die. This well wrought frame decay. And must these active limbs of mine. Lie mouldering in the clay.' (scanned photo emailed from her relatives in New Zealand) Below, winter view of Old School House, we think the field for horses would have been at the left.





DESIGN INSPIRATION

Bringing the outside in...

The Old School House is surrounded by the spectacular landscape of the North Lake District. Large windows give picturesque views over the beautiful hills above Ullswater, including the glorious Gowbarrow Fell, Little Mell Fell, High Street, Place Fell, Douthwaithead valley and Watermillock Common.

Bringing the outside in was the inspiration for the interior design, reflecting the colours and textures in the surrounding landscape. The warm greys of the stone walls are followed through in the carpets, floor tiles, window casings and kitchen worktops. The dark wood, deep greens and golden browns of the antique furniture reflect the majestic trees and bracken-covered hillsides.

The original stone wall in the hall has been varnished and lit as a double height feature behind the wooden staircase which is suspended in front of it. The red sandstone flags in the hearth and front door are from the original school floors. The 3ft thick stone walls have been carefully insulated to retain their curves and bumps, while an original oak beam has been oiled and left exposed across the landing, bathroom and bedroom.

The historic 1850 sampler was the inspiration for the garden. It shows a picket style fence beside the school which has been recreated around the new garden areas, while copper beech, holly and viburnum pick up the deep red and bright green in the stylised garden embroidery.



LAKE DISTRICT PRINTS

To continue the theme of 'bringing the outside in', we have hung these dramatic scenes from the Lake District in each room.



Derwent Water



Derwent Water



Jetty



Loughrigg



Loughrigg Tarn



Keswick Rowing Boats



Ullswater boathouse



Rydal Water in Winter



Cat Bells above Derwent Water



Coniston Water



Striding Edge



Lake Windermere



Buttermere near Honister

Source your own

Lens District Gallery, Keswick lensdistrict.com / [@stuartmcglennon](https://www.instagram.com/stuartmcglennon) or photowall.co.uk



CUMBRIAN POTTERY

We love collecting interesting Cumbrian pottery - here are a few that have inspired our colour scheme



Living Room - Bill Stalker, Phoenix Pottery, Cumbria.



Living Room - Anne Roper, Cumbria.



Living Room - Aidan Dixon, Wold Routh Original



Living Room - studio piece, Cumbria.



Living Room - provenance unknown



Living Room - Keswick Collectables

Source your own

Bill Stalker / Phoenix Pottery studio, Grizedale visitor centre / grizedalesculpture.org
Anne Roper / work available online and auction
Interlude Ceramics / interludeceramics.com / Brougham, Penrith CA10 2DE
Greystoke Gill pottery / greystokegillpottery.co.uk / Greystoke, Penrith CA11 0UA
Castlegate House Gallery / Cockermouth CA13 9HA / castlegatehouse.co.uk
Rheged Centre and Tebay Services



GREEN CREDENTIALS

Our aim at the Old School House is to care for the environment whilst not compromising on quality or comfort.

Products: We always aim to supply products with the best possible eco footprint. We source many of our environmentally friendly and ethically sourced products from Out of Eden, a local company specialising in luxury refillable toiletries and cleaning products.

Biological sewage treatment: The house shares a specialist biological sewage treatment system with our neighbour as it's not connected to mains drainage. The soft quilted toilet paper is environmentally friendly from 100% recycled paper and suitable for our system as it's designed to be quick dissolving. Please only use the cleaning products provided and don't put fats, oils, medicines or mouthwash down the drains as these upset the aerobic organisms in the tank.

Heating and electricity: We currently have an oil boiler, though this will be replaced with an air source heat pump in due course. To help minimise the house carbon footprint in the meantime, we have set the heating and hot water to automatically come on between 7-10am and 5-11pm every day, while radiators have been set to a mid-point. We want you to be comfortable during your stay, so if you need additional heat, please use the Boost button in the boiler room. If you turn the radiators up, please remember to turn them back down when you are warm enough or when you go out. The windows have shutters with opening louvres which are great at retaining warmth on cold days and nights, so do use them to conserve heat. The laundry room is next to the boiler room and therefore stays very warm so do use the overhead pulley dryer instead of the tumble dryer where possible. Please also use the dishwasher and clothes washer on their eco settings when possible.

Rubbish disposal: While we do everything we can at Old School House to respect the environment, the local council does not collect recycling from holiday cottages. If you wish to dispose of recyclable waste separately, there is the excellent Flusco recycling centre (CA11 0JB) just off the A66 en-route to Penrith. You may choose to drop your recycling there on your way home.



A photograph of a dog sitting on a wooden bench in front of a stone wall. A sign on the wall reads "THE OLD SCHOOL HOUSE".

THE OLD SCHOOL HOUSE

DOGS WELCOME

Well behaved dogs are always welcome

We are a dog friendly house and welcome up to two dogs at any time. We provide bowls, beds, toys and a towel for your use. Please leave these for the next guests, thank you.

For your dog's safety and the consideration of other guests we do ask that dogs and their owners are thoughtful during the stay and respect these rules.

- Dogs are not permitted in bedrooms or on any furniture. There is a lovely fluffy rug in the sitting room which they all love, and we also provide a number of dog beds.
- Please clean up after your dogs, including mud and mess both inside and outside the house, or extra cleaning costs may be charged. Dog waste can be put in the white rubbish bags. Please ensure poo bags are inside the white bag (not left on top) otherwise the bin collection won't take them.
- Dogs must be kept on leads and under strict control near sheep at all times. Be particularly mindful during early Spring when sheep are pregnant and when there are lambs around.
- Dogs must always be properly controlled and supervised. The Old School House has two enclosed gardens but neither are completely escape-proof for dogs.
- Dogs must not be left unattended in the house or garden. A barking dog is not good for the dog or our neighbours.

This is Mattie our Cockerpoo who loves coming to Matterdale. We'd love to see pictures of your dogs enjoying the house and surroundings so do post them on our Facebook page @oldschoolhousematterdale or tag us on Instagram #matterdale_oldschoolhouse



PRACTICAL DETAILS

Key

One key is provided, this opens the front door and the back (kitchen) door. Please leave it in the key safe by the front door each time you go out. **Please take care to move the numbers around so passers-by don't see the code.** The front and back doors are locked by raising the handle to engage the inside bolts, then turn the knob.

Security

Please close and lock all windows and doors whenever you leave the house.

Parking

The parking area to the right of Old School House is reserved for holiday guests. Park carefully so your vehicle doesn't obstruct the lane. Please don't park in the vehicle turning area.

Garden

The enclosed front garden has a lawn and seating to enjoy the spectacular views across the valley.. **Please keep the gate shut to keep sheep out as they eat everything! and always supervise young children as the low stone wall has a long drop on the other side.** The private and sheltered back garden has seating for outdoor dining on sunny evenings.

Bikes

There are 4 bike hooks and an outside tap and hose for washing down muddy bikes and dogs (though it's removed in winter to protect from frost damage)

No Smoking

Old School House is a no smoking and no vaping property. You are welcome to smoke in the gardens but please put all rubbish in the bin bags provided.

Heating & hot water

An oil fired boiler powers heating and hot water, accessed through the laundry room. Heat & water are set to come on 7-10am and 5-11pm automatically. For further details see the notice beside the boiler.

Toilets

We have a specialist biological sewage treatment system. Please only flush toilet paper. Use the bin for everything else.

Rubbish

All rubbish including food, plastics, glass, paper etc. must be put in the white plastic bags only. Please don't leave any other rubbish bags - they won't be collected and you will incur a charge because our cleaner will need to dispose of them.

While we do everything we can at Old School House to respect the environment, the local council does not collect recycling from holiday cottages. If you wish to recycle your waste, the excellent Flusco recycling centre (CA11 0JB) is just off the A66 en-route to Penrith. You may choose to drop your recycling there on your way home.

Dogs

We are a dog friendly house and welcome up to two dogs at any time. We provide bowls, beds,

USEFUL CONTACTS

toys and a towel for your use. Please keep dogs out of bedrooms and off furniture. Clear up all poo in the garden. Keep dogs on leads around sheep especially during lambing.

Breakages

Accidents happen, but please let us know about damage or breakages as soon as possible so we can make good for the next guests. Contact details are in your booking email.

Log burner

A starter pack of kiln dried logs is left ready for you, further supplies can be bought from the Rheged Centre on the A66. Please only use good quality seasoned wood to get the best out of the log burner. Damp wood creates excess smoke which sets the fire alarms off.

To operate: slide the bottom handle to the right before lighting. Place logs and fire-lighters inside and light. Once these have caught (after 2-3 minutes) close the door and control the air flow by gradually sliding the bottom handle to the left but do not close it completely (see instructions in desk drawer).

Fire protection

The fire alarm is active throughout the house. A fire extinguisher can be found under the stairs. A fire blanket and additional extinguisher are provided in the kitchen. The alarm system also senses carbon monoxide and provides emergency lighting in corridors and living areas. The system is monitored regularly and will alert you if there is to be a sound check.

Snow and ice

If you need to spread grit on the lane, there is a bucket and shovel by the oil tank behind the house. The gravel store (green Council storage box) is on your left half way down the lane to the main road.

Fuse box

If something is tripped the fuse box can be found in the boiler room.

Television and WiFi

Wifi can be slow in this area. You may find it quicker to use a 4G hotspot if you have an iPhone. There is a remote control for the TV and one for the DVD (see instructions in desk drawer). Press the house icon in the middle of the TV remote to access streaming services. **If you sign in to your Netflix, Amazon or other streaming account please remember to sign out before you leave.**

Network: **BT HOMESPOT-H5W** password: **8aba8fcb8b**

Medical & Emergency

Doctors surgery Glenridding Health Centre CA11 0PD / 01768 482 297

Pharmacy Penrith Health Centre Pharmacy CA11 8HW / 01768 864 761

Hospital Penrith hospital 01768 245 555 / medical help NHS 111

Dentist Stricklandgate Dental practice 01768 865 744

Police Penrith police station CA11 7UY

Emergency Ambulance/Fire/Police 999

Vet Paragon Vet Newbiggin CA11 0HT / 017684 83789

Tourist Information

Glenridding car park 01768 482 412

Environmental travel options

Taxis

Book ahead when travelling to Penrith by train

M&A Glenridding 01768 482 372

Penrith taxis 01768 899 298

Eden taxis 01768 865 432

Buses

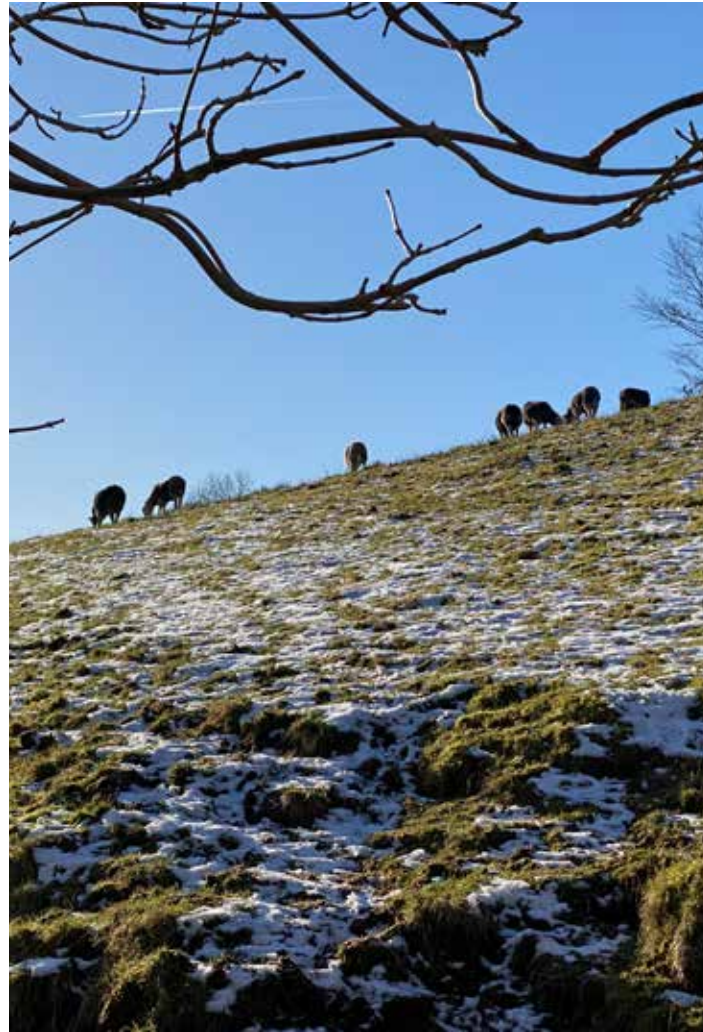
Stagecoach bus services throughout Cumbria. Penrith train station to Keswick bus station 40mins.

Bike hire

Ullswater e-bikes full or half day hire can be delivered to Old School House or pick up in Glenridding

Lake cruise

Ullswater 'steamers' have 5 heritage vessels which take visitors around the lake. You can choose to stop at any of the 4 piers to join the footpaths that circle the lake or do a round trip back to Glenridding.



DEPARTURE

We wish you could stay longer... but due to the tight cleaning schedule, we ask you to fully exit by 10am.

Departure can be hectic but we kindly ask before you leave, please:

- **Food** - remove all food from the cupboards and fridge-freezer
- **Kitchen items** - ensure all dishes, pots & pans are washed and put away
- **Beds & towels** - strip the beds and leave in a pile with used towels. (mattress and pillow protectors should be left in place for our cleaner to change.)
- **Rubbish** - all rubbish (including bathroom bins) put into the white bags provided. Ensure the bags are tied and left in the bins at the bottom of the lane before collection 7am Friday. Close bin lids firmly to keep foxes out.
- **Breakages** - if you haven't already, please let us know so we can make the house just as pleasant for the next visitors, contact us on details in your confirmation email. Thanks.
- **Heating** - check and reset radiators to a mid point and thermostats to 15 if you have made changes during your stay.
- **House key** - ensure the house key is locked back in the key safe and the numbers are jumbled.

Very many thanks for your help. We hope you have an easy and safe journey home and take with you many happy memories.

Thank you from the housekeeper and owner,
Old School House Matterdale

Beautiful all year round, winter around Old School House, Herdwicks



OUT AND ABOUT



COUNTRYSIDE CODE

We hope you enjoy exploring the Lake District National Park as much as we do. www.lakedistrict.gov.uk has helpful tips on planning your trips. Whether you're new to the area or a seasoned visitor, please help us look after the landscape you love and follow the countryside code.

Respect everyone

- be considerate to those living in, working in and enjoying the countryside
- leave gates and property as you find them
- do not block access to gateways or driveways when parking
- be nice, say hello, share the space
- follow local signs and keep to marked paths unless wider access is available

Protect the environment

- take your litter home - leave no trace of your visit
- do not light fires and only have BBQs where signs say you can
- always keep dogs under control and in sight
- dog poo - bag it and bin it in any public waste bin or take it home
- care for nature - do not cause damage or disturbance

Enjoy the outdoors

- check your route and local conditions
- plan your adventure - know what to expect and what you can do
- enjoy your visit, have fun, make a memory



FOOD & DRINK

Food shopping

Glenridding

Closest mini-supermarket, 10 mins drive down the hill. Ideal for essentials.

Rheged Centre

Grass-roofed Lakeland heritage centre in a former quarry, sells a wide range of luxury, local and fresh food in the petrol station and main centre, sister to Tebay services. Also craft shops, gallery and a huge 3D cinema screen.

Penrith

Supermarkets: Booths (part of Waitrose), Morrisons and Sainsburys. A wide range of independent shops, small cinema, cafés and restaurants. Park near the main square and ask any of the shops for a visitors parking permit. Take empty containers to Another Weigh and stock up on trail mix, dry food and environmental products.

Keswick

Large Booths supermarket (part of Waitrose). Also many high street and independent shops selling hiking kit and outdoor wear. Tourist focused craft shops and street market on Saturdays.

Pubs & Restaurants

Dockray

The Royal Hotel pub / 5mins walk down the hill / excellent hearty meals and beers on tap.

Glenridding

Inn on the Lake / hotel restaurant / good for afternoon tea in the conservatory with views of Ullswater

just beyond Troutbeck

Basecamp North Lakes farm shop and kitchen CA11 OSG / 10mins drive just past Troutbeck on A66 (llama walks and sustainable food)

Penrith

La Casita / exceptional tapas

Grants of Castlegate / bistro

Four and Twenty / bistro with a focus on local seasonal produce

Askham Hall / Michelin star fine dining

Dacre

The Horse and Farrier / good quality pub food



DOORSTEP WALKS

Forget the car, walk from the door.

We provide a selection of back packs and hiking sticks in the cloakroom for your use on the hills. Please leave these for the next guests to use.

Ulcat Row to Dockray (quiet roads, grass footpath, no hills, circular 5k)

Walk down the lane to the main road. Cross over to Matterdale church and continue down the side road with the church on your left. Keep walking, approx 1 km, until you reach the first turn-off on your right. Turn up here to the cluster of houses called Ulcat Row. On your right through a farm gate is the public footpath. Follow this for approx 2km, along the valley. Your first right turn is marked with a sign post pointing to Dockray follow this right turn towards the small river. Go over the wooden bridge and follow the footpath (250m) up to Dockray village, where you will see The Royal Hotel. Cross towards the hotel, turn right and follow the path beside the main road up the hill and back to Old School House.

Aire Force (steep, uneven terrain, there and back 7k)

Walk down the lane to the main road, turn right and walk down to Dockray. At the crossroads beside The Royal Hotel cross the road to the red letterbox and the footpath signposted Aire Force/ Gowbarrow. Follow the signs, you will soon meet Aire Beck river, running between large boulders. Follow the path down hill with the river to your right. After about 2km you will reach a stone bridge over the river, from here you can see the dramatic Aire Force waterfall. Turn back here or continue following the waterfall downward another 1 km to the National Trust booth and car park beside Ullswater. After a rest, turn around

and walk back up to Old School House or stop at The Royal for a much deserved drink.

Gowbarrow (tough, steep, uneven terrain, circular 9k)

Walk down the lane to the main road, turn right and walk down to Dockray. At the crossroads beside The Royal Hotel cross the road to the red letterbox and the footpath signposted Aire Force/ Gowbarrow. Follow the signs, you will soon meet Aire Beck river, keep walking. Past the gate, look out for signs to Gowbarrow on your left. Follow the signs and path upwards. Eventually you reach the cairn at the peak. Amazing views across the hills and a glimpse of Ullswater. Follow the foot tracks downhill opposite to the way you came up. Follow the pathway on its gentle right hand curve as you come out on the side of the hill facing Ullswater. Keep following the path high above Ullswater to meet the Aire Force pathway. When you meet Aire Beck turn right up the hill and continue walking up hill with the waterfall on your left until you see signs to Dockray. Once you reach The Royal, stop for a drink or follow the footpath beside the main road back up to Old School House.

Discover other walks from Old School House...

- www.matterdale.org/walks
- www.getoutside.ordnancesurvey.co.uk/local/matterdale-end-eden
- www.lakedistrict.gov.uk/visiting/places-to-go/explore-ullswater-glenridding-and-pooley-bridge



THINGS TO DO

A few ideas to get you started...

Outdoors

General

Lake District activities / www.lakedistrict.gov.uk

Visit Cumbria / www.visitcumbria.com

Adventure

Via Ferrata Honister

Mountain bike hire & cycle routes in Grizedale Forest, Whinlatter and many other locations

Ullswater ebikes

On water

Kayaking, paddle boarding, sailing rental in Ullswater, Derwent Water and Windermere

Ullswater paddle steamer is a relaxing way to enjoy the lake or a romantic start to a walk

On the hills

So many walks! Just a few to consider:

Walk the Wainwrights

Helvellyn

Striding Edge

Cat Bells

Indoors

Cultural

Lowther Castle and gardens

Dove Cottage home to poet William and Dorothy Wordsworth

Beatrix Potter's house

Grizedale Forest visitor centre has a gallery and artists' studios

Castlerigg stone circle transports you back 5000 years.

Carlisle art gallery and cathedral

Broughton Castle & local craft shops

Cinemas

Rheged Centre (luxury 3-D screen), Penrith and Keswick

There are additional activity leaflets in the separate information folder. Please add any new ones you collect that may be of interest to other guests.

Castlerigg stone circle outside Keswick
Striding Edge, Helvellyn, walk starts from Glenridding



CHILDREN

Fun activities for children and adults alike.

Adventure

Kong Adventure indoor rock climbing and outdoor activities (book ahead)

Keswick indoor climbing wall and outdoor activities, including archery (book ahead)

Via Ferrata Honister for children (& adults) with a head for heights

GoApe in Grizedale Forest and Whinlatter (Segway hire for teens and up)

Mountain bike rental in Grizedale Forest (and many other locations)

On water

Kayaking, paddle boarding, sailing rental in Ullswater, Derwent Water, Windermere and others

Head to Glenridding to find places to swim and paddle on the shores of Ullswater (no life guards)

For younger children Askham heated open air swimming pool is very popular.

Walks

Walks suitable for all ages, search: www.alltrails.com/en-gb/england/cumbria/penrith/kids

Indoor activities

Derwent pencil museum

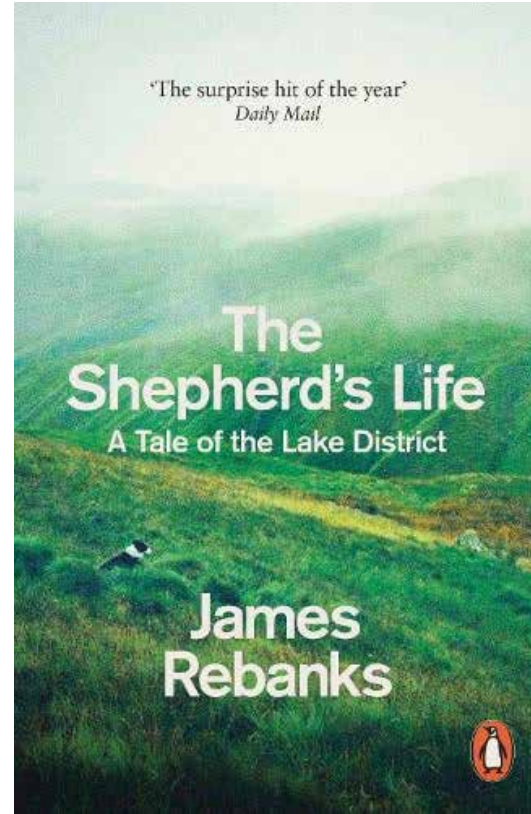
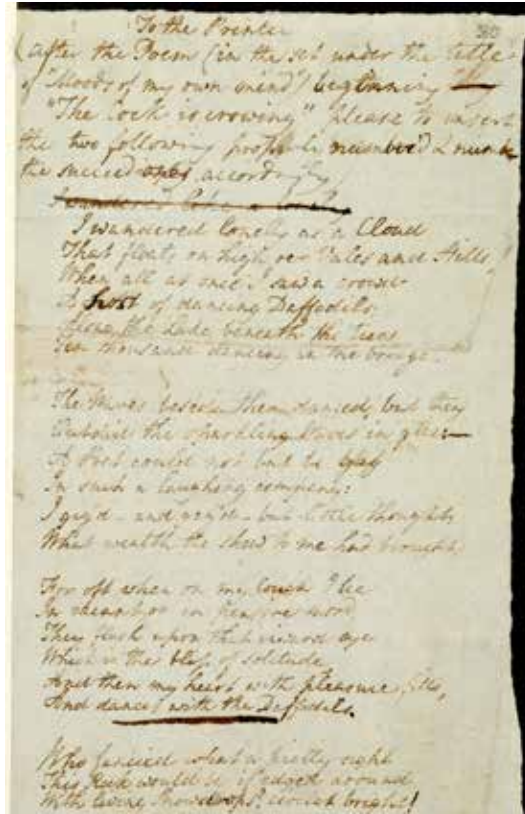
Crafty Monkeys Penrith pottery making

Walk with Llamas

Basecamp North Lakes farm shop and kitchen CA11 0SG / 10mins drive just past Troutbeck on A66

LITERARY CONNECTIONS

The beautiful landscape of the Lake District has inspired many writers: Wordsworth saw his daffodils along the banks of Ullswater; Beatrix Potter had her farm near Ambleside; Ransome set Swallows and Amazons on Windermere & Coniston; local farmer and writer, James Rebanks has his farm in Matterdale and was also involved in the bid for the Lake District to receive World Heritage status in 2017.



William Wordsworth

Visit Dove Cottage, Wordsworth's home in Grasmere.

When William and Dorothy Wordsworth visited Glencoyne Park (on Ullswater, between Aire Force and Glenridding) in 1802, the sight inspired Wordsworth to write his famous poem, 'Daffodils'.

'When we were in the woods beyond Gowbarrow Park, we saw a few daffodils close to the water side. We fancied that the lake had floated the seed ashore and that the little colony had so sprung up. But as we went along there were more and more and at last under the boughs of the trees, we saw that there was a long belt of them along the shore, about the breadth of a country turnpike road. I never saw daffodils so beautiful they grew among the mossy stones about and about them, some rested their heads upon these stones as on a pillow for weariness and the rest tossed and reeled and danced and seemed as if they verily laughed with the wind that blew upon them over the lake, they looked so gay ever dancing ever changing.'

Dorothy Wordsworth, The Grasmere Journal – Thursday 15 April 1802

James Rebanks

'The Shepherd's Life, a tale of the Lake District' (2015) / 'English Pastoral: An Inheritance' (2020)

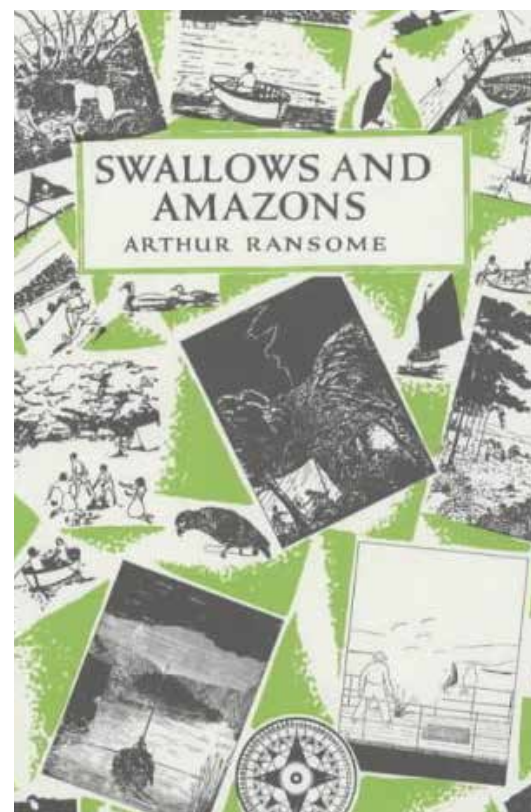
Rebanks farms on the hills around Matterdale, raising Herdwicks and other local breeds of sheep. Visit Penrith (July) or Lowther (August) agricultural shows to admire prize winning sheep and see displays of many rural activities.

Beatrix Potter

Walk up Newlands Valley to find Mrs Tiggly-Winkle's house "I have seen that door into the back of the hill called Cat Bells – and besides I am very well acquainted with dear Mrs. Tiggy-winkle!". Visit Hill Top, Beatrix Potter's house near Ambleside.

Arthur Ransome

'Swallows and Amazons' book, more recently a 2016 film, is set on a mix of Windermere and Coniston. Visit Bank Ground Farm cafe, where Ransome stayed in 1928, inspiration for the start of the book.



KEEP IN TOUCH...

Always looking to improve

We hope you are having a wonderful time! During your stay, please let us know any comments or requests you have (use contact details on your booking email). We want to ensure your visit is as comfortable and relaxing as possible.

Please Review

After you leave, please let us know what you liked best about Old School House and what we could improve. Please contact us through your booking email or please respond to follow up Review email.

Follow & Share

We hope you have many happy memories, we'd love you to post your photos and comments on social media #oldschoolhousematterdale. We are on Facebook and Instagram, follow us as we give occasional prizes and bonus content @oldschoolhousematterdale.

@oldschoolhousematterdale
#matterdale_oldschoolhouse

